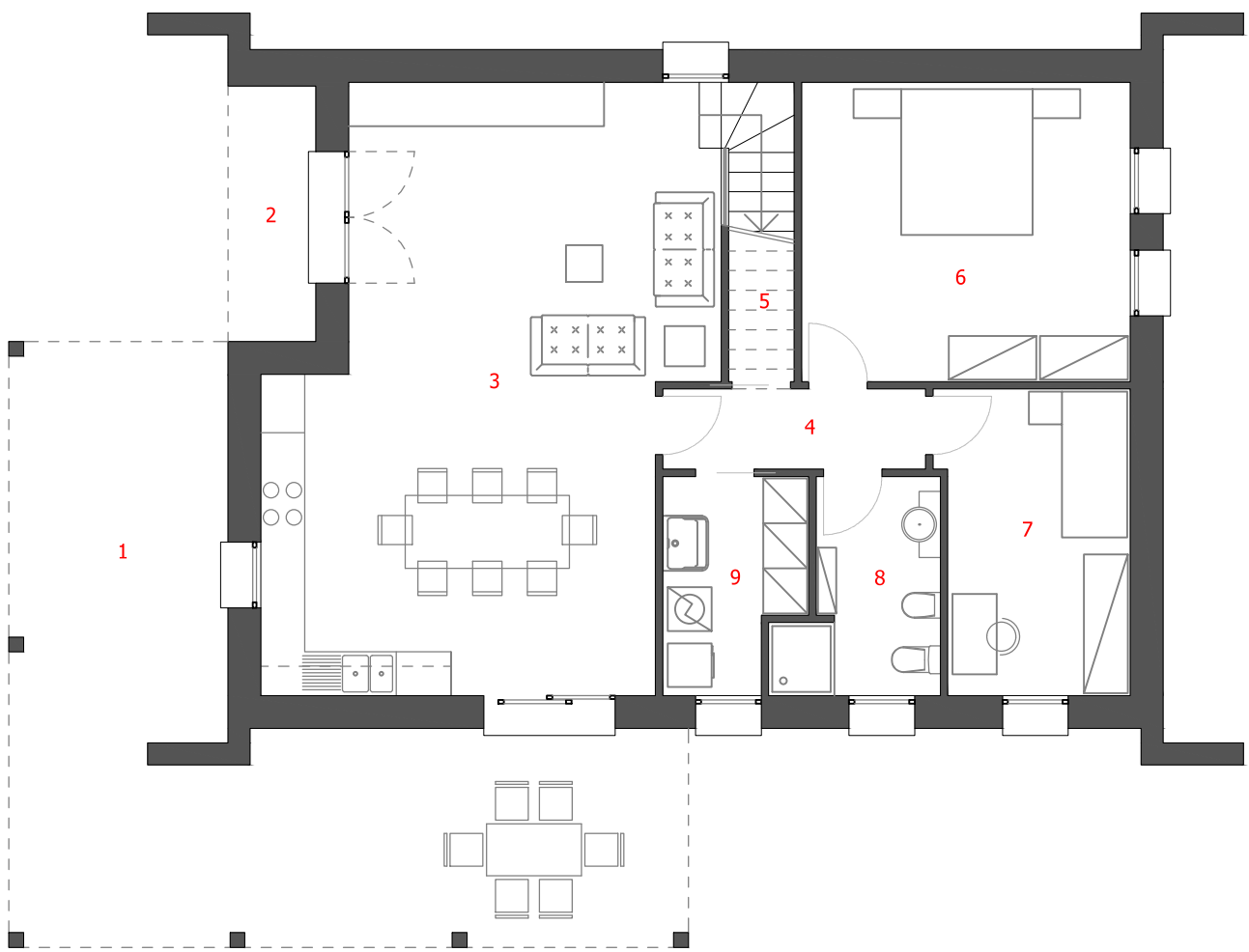


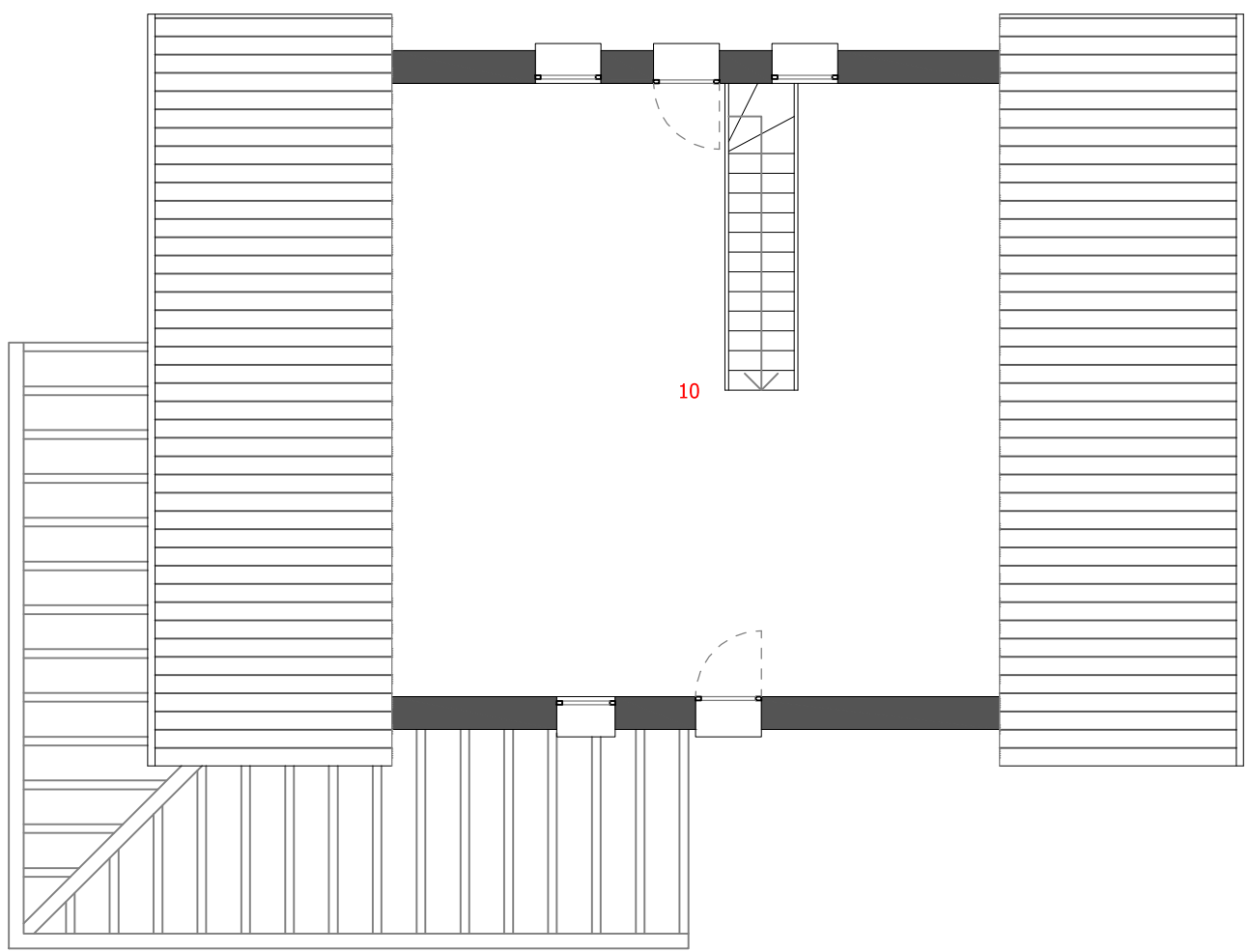
12.80

9.30

PIANO TERRA	
1: PERGOLATO	43,32 mq
2: LOGGIA	4,50 mq
3: SOGGIORNO-CUCINA	43,98 mq
4: DISIMPEGNO	3,96 mq
5: RIPOSTIGLIO	1,70 mq
6: CAMERA	18,45 mq
7: CAMERA	10,72 mq
8: BAGNO	5,72 mq
9: LAVANDERIA	5,28 mq
PIANO SOTTOTETTO	
10: SOFFITTA	70,00 mq
Totale:	<u>207,33 mq</u>



PIANTA PIANO TERRA



PIANTA PIANO SOTTOTETTO