

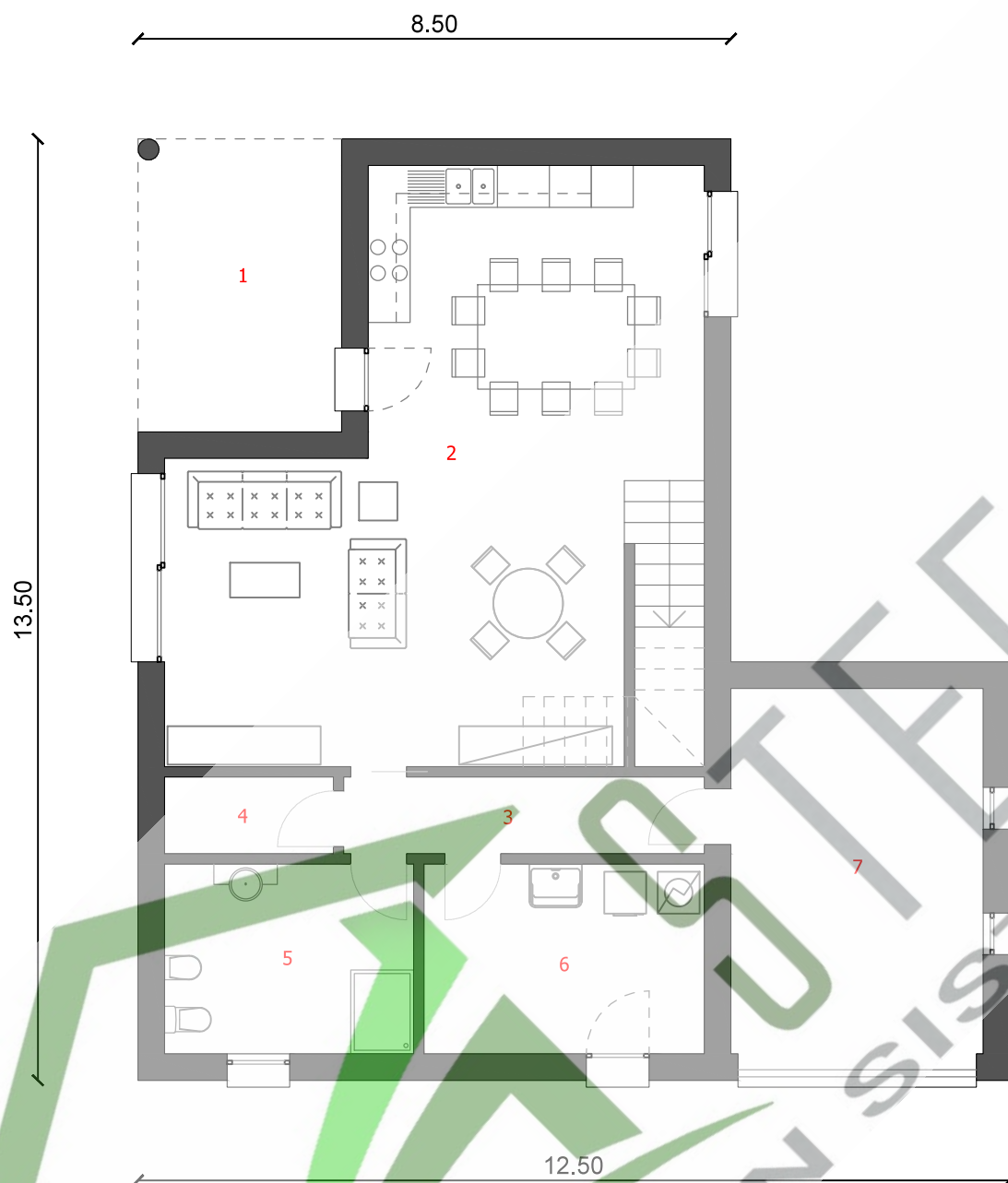
PIANO TERRA

1: PORTICO	12,26 mq
2: SOGGIORNO-CUCINA	49,75 mq
3: DISIMPEGNO	5,68 mq
4: RIPOSTIGLIO	2,66 mq
5: BAGNO	9,71 mq
6: LAVANDERIA-STIRERIA	10,93 mq
7: GARAGE	18,97 mq

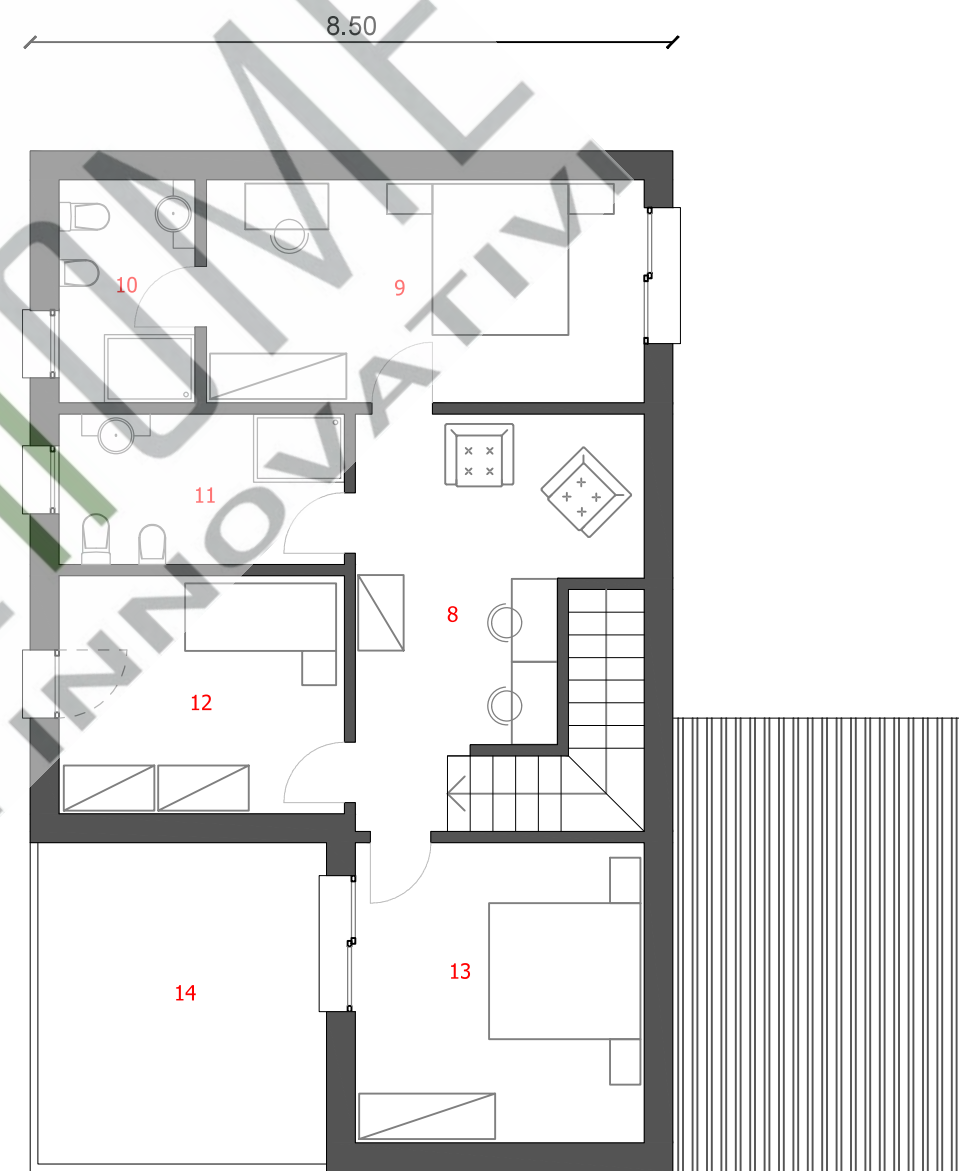
PIANO PRIMO

8: SALOTTINO	15,62 mq
9: CAMERA	17,08 mq
10: BAGNO	5,31 mq
11: BAGNO	7,51 mq
12: CAMERA	11,89 mq
13: CAMERA	15,16 mq
14: TERRAZZO	16,23 mq

Totale: 198,76 mq



PIANTA PIANO TERRA



PIANTA PIANO PRIMO

CASE CON SISTEMI INNOVATIVI