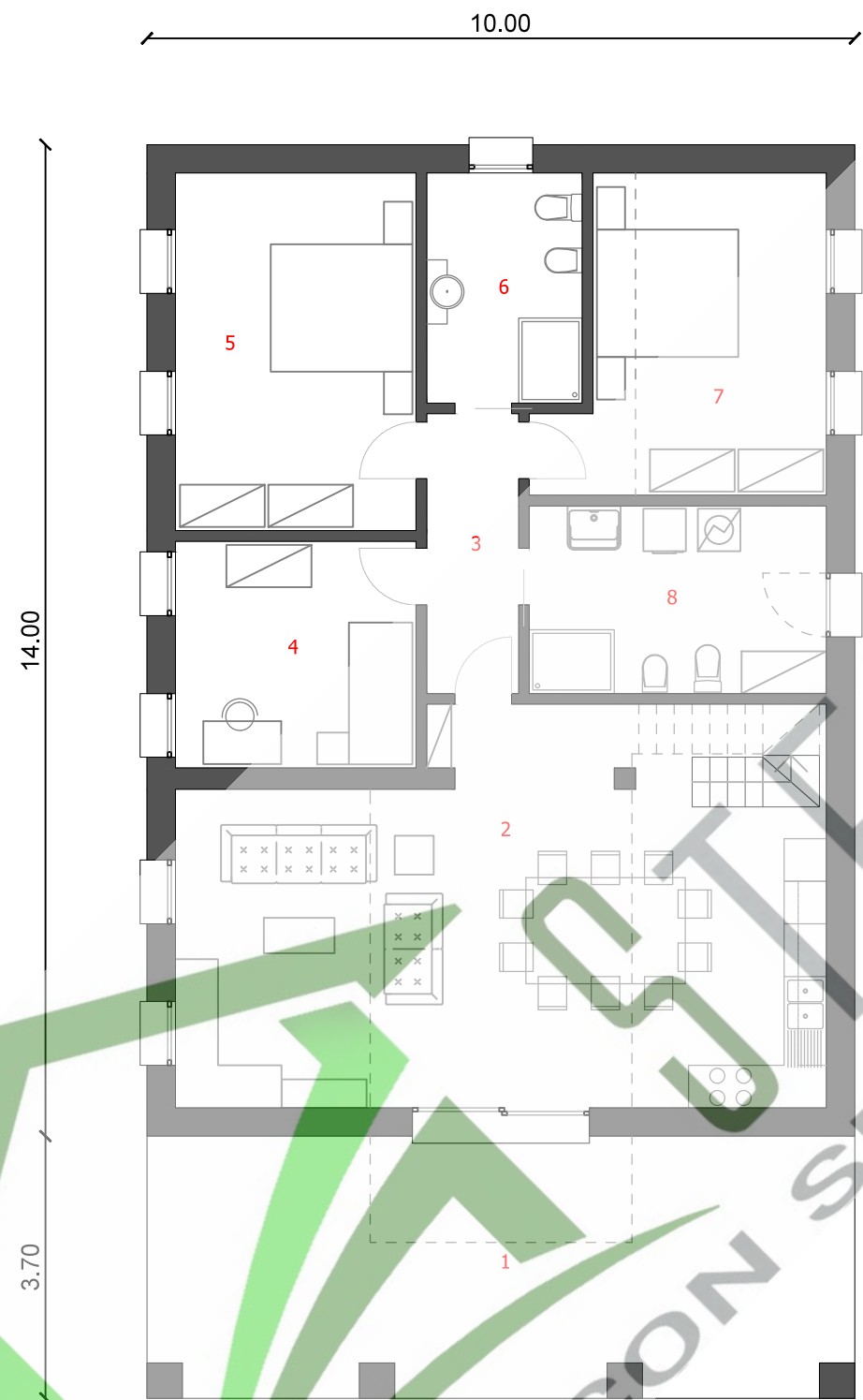
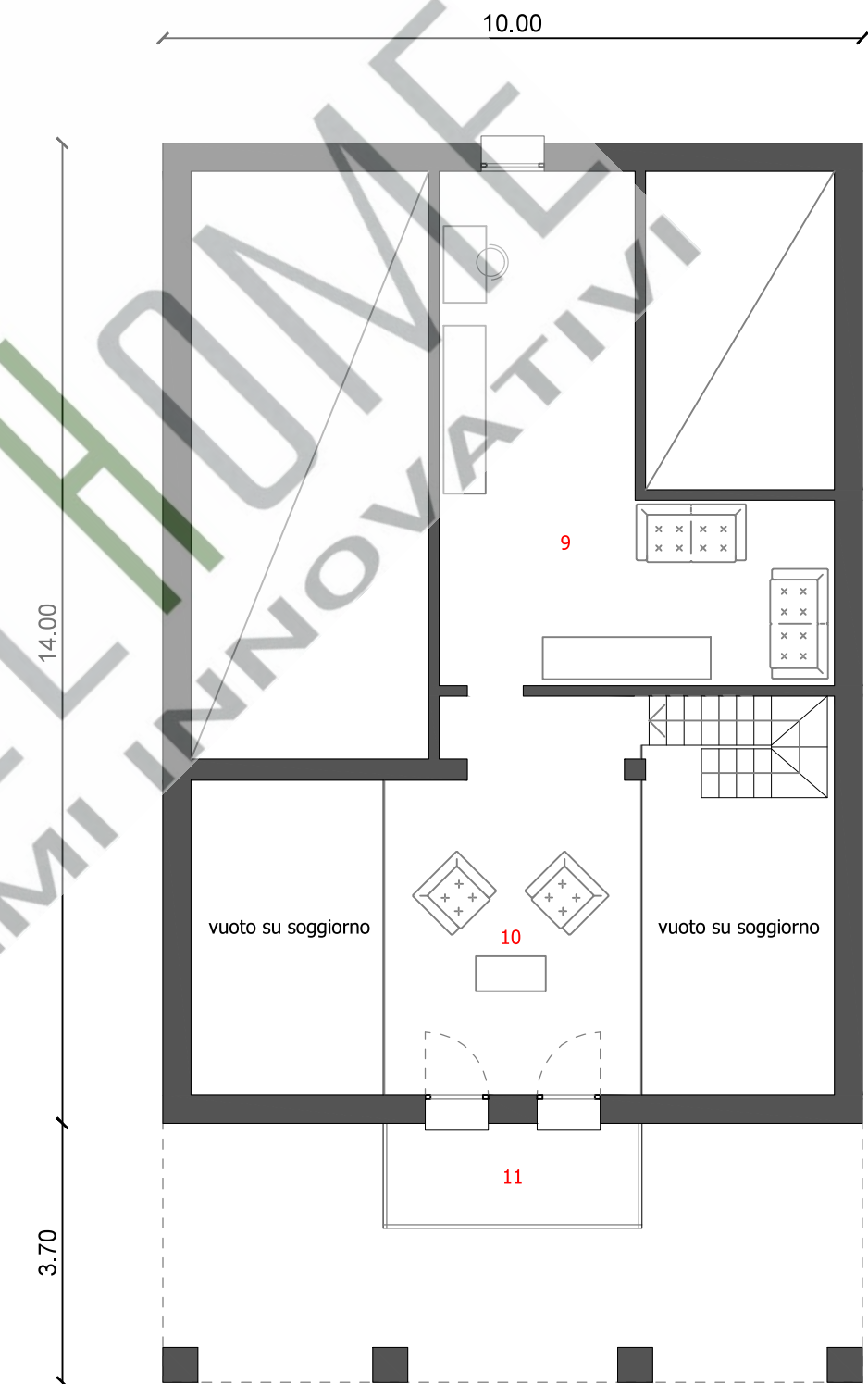


PIANO TERRA	
1: PORTICO	37,00 mq
2: SOGGIORNO-CUCINA	45,00 mq
3: DISIMPEGNO	5,14 mq
4: CAMERA	10,88 mq
5: CAMERA	17,17 mq
6: BAGNO	7,15 mq
7: CAMERA	16,05 mq
8: BAGNO-LAVANDERIA	11,13 mq
PIANO PRIMO	
9: SOFFITTA	28,13 mq
10: SOPPALCO	20,00 mq
11: TERRAZZO	5,55 mq
Totale:	<u>203,15 mq</u>



PIANTA PIANO TERRA



PIANTA SOPPALCO

CASE CON SISTEMI INNOVATIVI