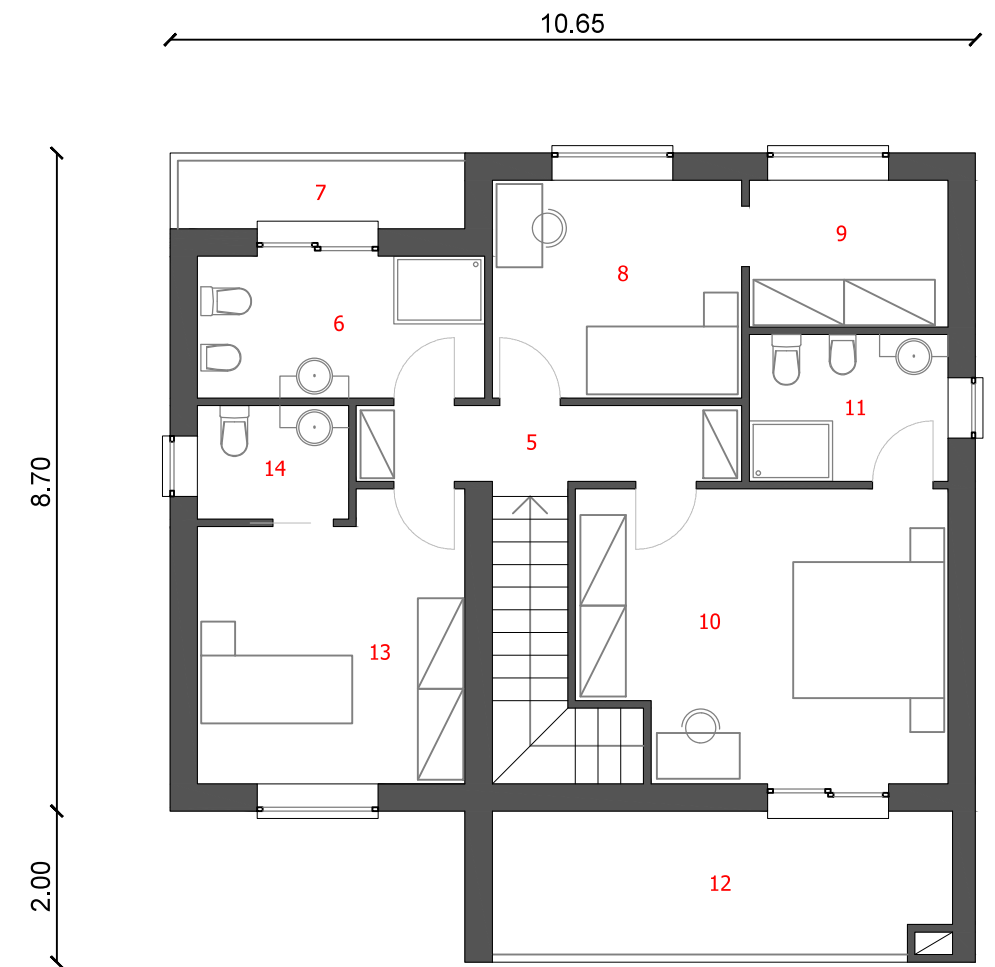


PIANO TERRA	
1: SOGGIORNO-CUCINA	40,65 mq
2: GARAGE	17,70 mq
3: LAVANDERIA	5,83 mq
4: BAGNO	5,35 mq
PIANO PRIMO	
5: DISIMPEGNO	5,10 mq
6: BAGNO	7,14 mq
7: TERRAZZO	3,90 mq
8: CAMERA	9,50 mq
9: CABINA ARMADIO	5,10 mq
10: CAMERA	18,13 mq
11: BAGNO	5,10 mq
12: TERRAZZO	11,88 mq
13: CAMERA	12,75 mq
14: WC	3,00 mq
Totale:	<u>151,13 mq</u>



PIANTA PIANO TERRA



PIANTA PIANO PRIMO