

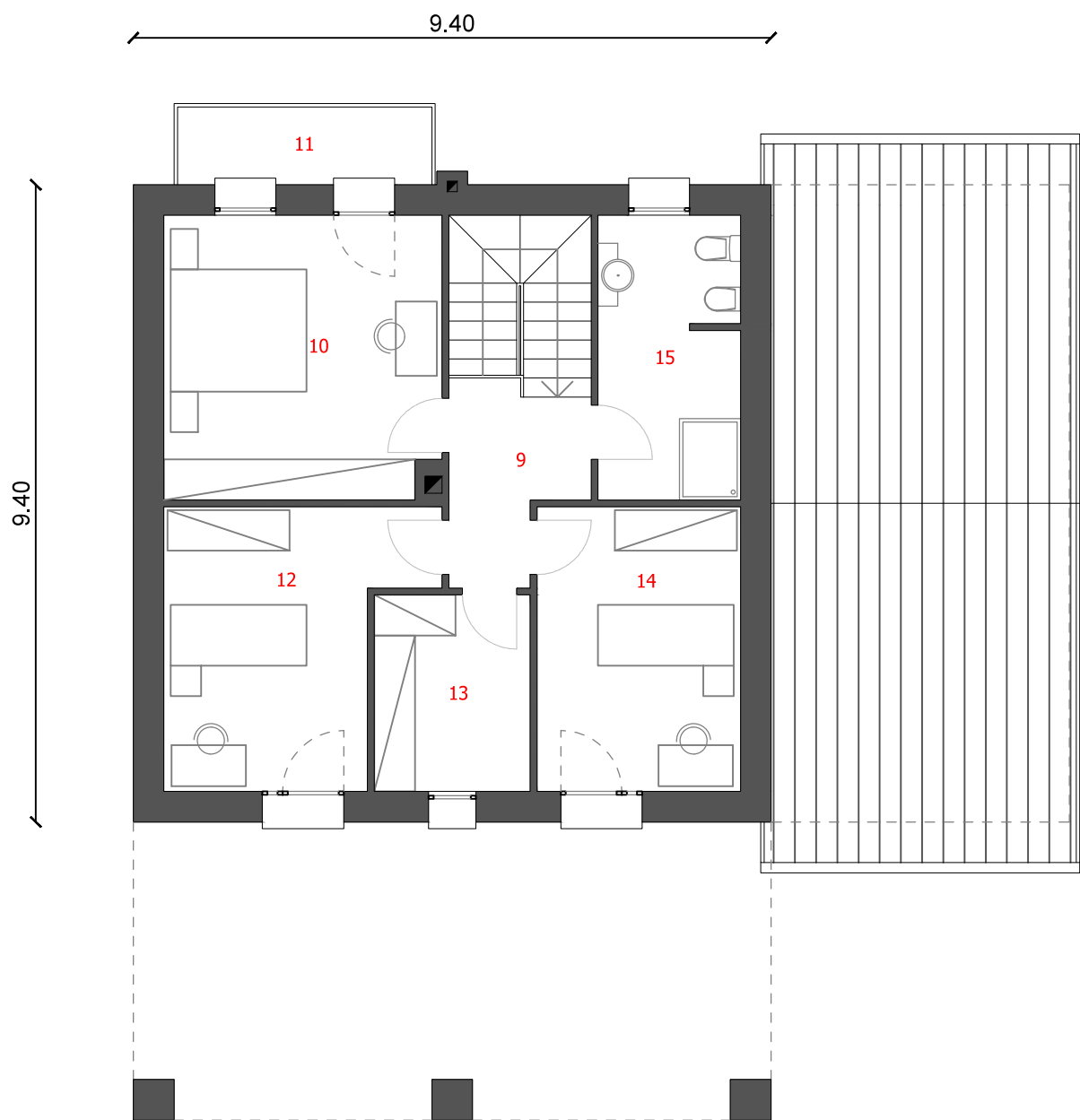
|                     |          |
|---------------------|----------|
| PIANO TERRA         |          |
| 1: PORTICO          | 41,36 mq |
| 2: SOGGIORNO-CUCINA | 43,25 mq |
| 3: LAVANDERIA       | 9,22 mq  |
| 4: DISIMEPEGNO      | 5,33 mq  |
| 5: CENTRALE TERMICA | 7,79 mq  |
| 6: DISPENSA         | 8,61 mq  |
| 7: BAGNO            | 6,29 mq  |
| 8: GARAGE           | 20,39 mq |

|                |          |
|----------------|----------|
| PIANO PRIMO    |          |
| 9: DISIMPEGNO  | 5,04 mq  |
| 10: CAMERA     | 16,98 mq |
| 11: TERRAZZO   | 4,31 mq  |
| 12: CAMERA     | 13,92 mq |
| 13: GUARDAROBA | 6,67 mq  |
| 14: CAMERA     | 12,60 mq |
| 15: BAGNO      | 8,74 mq  |

Totale: 210,50 mq



PIANTA PIANO TERRA



PIANTA PIANO PRIMO