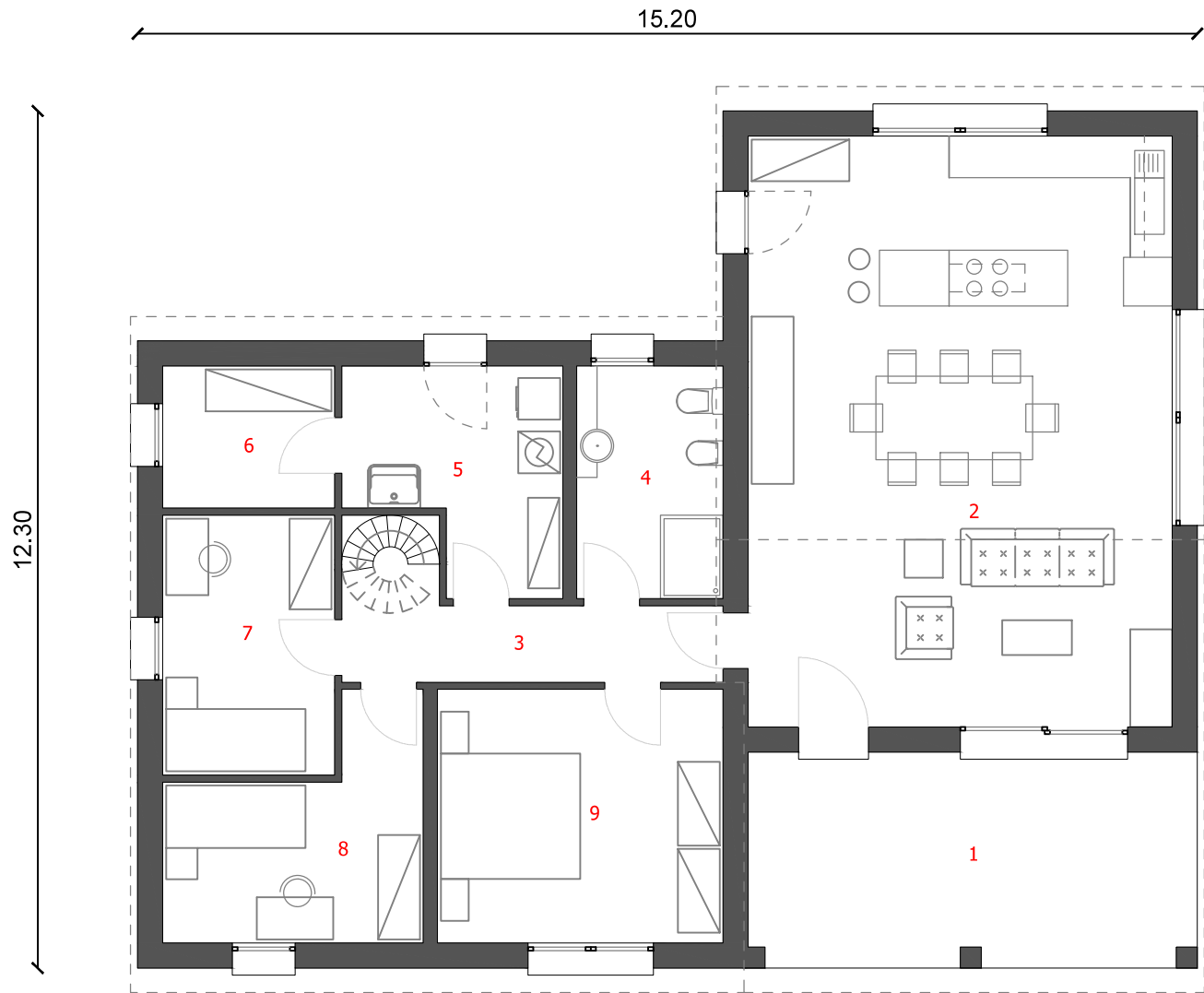
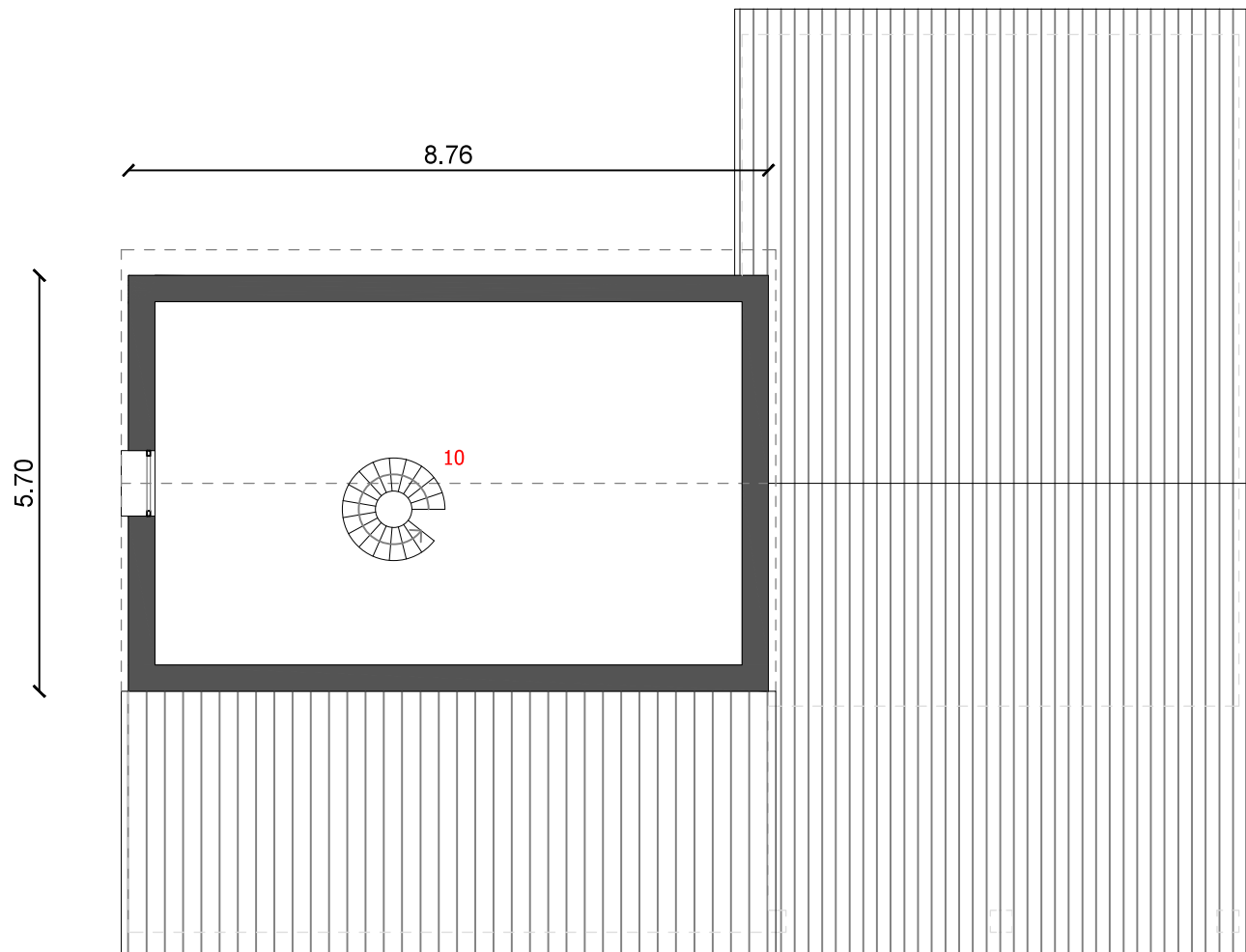


PIANO TERRA	
1: PORTICO	19,71 mq
2: SOGGIORNO-CUCINA	51,56 mq
3: DISIMPEGNO	6,00 mq
4: BAGNO	7,00 mq
5: LAVANDERIA	8,63 mq
6: RIPOSTIGLIO	5,04 mq
7: CAMERA	9,21 mq
8: CAMERA	10,20 mq
9: CAMERA	14,92 mq
PIANO PRIMO	
10: SOFFITTA	38,45 mq
Totale:	<u>170,72 mq</u>



PIANTA PIANO TERRA



PIANTA PIANO PRIMO